

# CODELINE® - 40E SERIES

## 4 INCH END ENTRY MEMBRANE HOUSING FOR RO APPLICATIONS

### MEMBRANE HOUSING DATASHEET

ARTICLE CODE: 40E30N, 40E60, 40E100

#### GENERAL INFORMATION

Codeline 40E Series is membrane housing of 4" diameter with end entry design. This is used for commercial and industrial RO applications. Vessel models are available upto a maximum operating pressure of 300 PSI, 600 PSI & 1000 PSI. These are made up of epoxy / glass composite to meet the demands of long term and continuous use in RO processes. Codeline 40E Series vessels can accommodate any standard\* 4" membrane element.

\* Standard element length = 40 " long

#### UNIQUE FEATURES

- Mirror Finish ID for easy & quick loading and unloading of membranes
- Quick lock head retention system for quick access to membranes
- Exteriors coated with high gloss polyurethane paint for UV Resistance
- Compact design for use in compact and low energy water treatment units
- More accurate Head Seal Area is formed by mandrel surface
- Head Seal is captured, hence doesn't roll during head assembly fitment

#### CERTIFICATIONS

- Codeline 40E30N-2 & Codeline 40E30N-3: CE certified
- Codeline 40E60: CE certified
- Codeline 40E100: ASME code compliant & CE certified

#### CODELINE 40E SERIES SPECIFICATION\*

MODEL NUMBER	DRAWING NUMBER	MAX. OPERATING PRESSURE	MAX. OPERATING TEMPERATURE	QUALIFICATION PRESSURE	ELEMENT LENGTH
CODELINE 40E30N	518016	300 PSI / 20 Bar	120 °F / 49 °C	1800 PSI / 124 Bar	1-3
CODELINE 40E60	518017	600 PSI / 41 Bar	120 °F / 49 °C	3600 PSI / 248 Bar	1-6
CODELINE 40E100	518015	1000 PSI / 68 Bar	120 °F / 49 °C	6000 PSI / 413 Bar	1-7

\* Specifications are subjected to change without prior notice (for more details refer model specific engineering drawings)

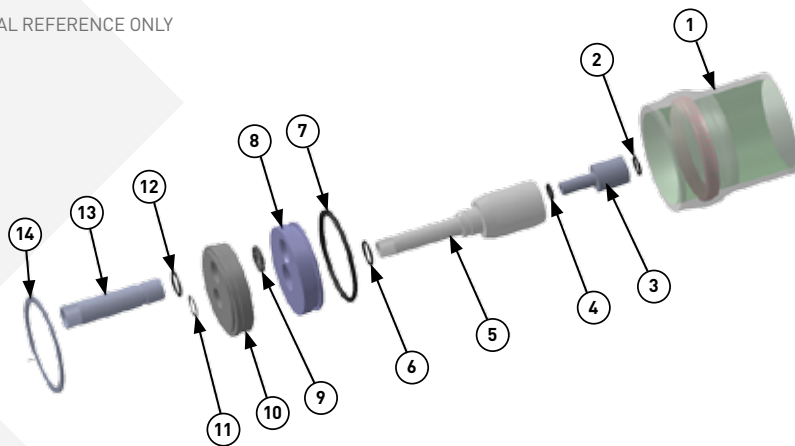
# CODELINE® - 40E SERIES

## 4 INCH END ENTRY MEMBRANE HOUSING FOR RO APPLICATIONS

### MEMBRANE HOUSING DATASHEET

#### EXPLODED VIEW & DETAILS

A GENERIC VIEW FOR VISUAL REFERENCE ONLY



#### PARTS TABLE

DRG REG	QTY	DESCRIPTION	MATERIAL	40E30N	40E60	40E100
				PART NUMBER	PART NUMBER	PART NUMBER
1	1	Shell	Filament Wound Epoxy / Glass composites. Head Locking grooves integrally wound in place.	Order section	Order section	Order section
2	AR	PWT Seal	Ethylene Propylene - O Ring	NA	As required	As required
3	2	Adapter	Engineering Thermoplastic	NA	As required	As required
4	2	Adapter Seal	Ethylene Propylene - O Ring	45296	45294	45294
5	2	Permeate Port	Engineering Thermoplastic	NA	NA	47469
6	2	Permeate Port Seal	Ethylene Propylene - O Ring	NA	NA	45299
7*	2	Plug Seal	Ethylene Propylene - O Ring	45317	45317	45317
8*	2	Sealing Plate	Engineering Thermoplastic	NA	NA	50481
9	2	Port Retainer Set	CF8M Cast SST, Two-Piece Set	NA	NA	50489
10	2	End Plug Sub Assembly / Bearing Plate	Engg. Thermoplastic*** / 6061-T6 hard anodized Alum. Alloy	95927***	50312***	47471
11	2	Port Retainer	PH 15-7 MO SST	NA	NA	45244
12	2	F / C Port Seal	Ethylene Propylene - O Ring	NA	NA	45299
13**	2	F / C Port	UNS32750	NA	NA	47472
14	2	Retaining Ring	316 Stainless Steel	45260	45260	45260
15*	AR	Saddle	Engineering Thermoplastic	45058	45058	45058
16*	AR	Strap Assembly	304 Stainless Steel Cushion	47459	47459	47459

\* Not shown in the exploded view and optional for the 40E30N

\*\* For 40E100 the UNS32750 material is suitable only

\*\*\* Engg. thermoplastic material



CODELINE®

PENTAIR WATER INDIA PVT. LTD. L / 52 - 55, VERNA INDUSTRIAL ESTATE, VERNA, GOA, INDIA - 403 722 WWW.CODELINE.COM

Note: The information and data contained in this document are based on our general experience and are believed to be correct. They are given in good faith and are intended to provide a guideline for the selection and use of our products. Since the conditions under which our products may be used are beyond our control, this information does not imply any guarantee of final product performance and we cannot accept any liability with respect to the use of our products. The quality of our products is guaranteed under our conditions of sale. Existing industrial property rights must be observed.  
DS CODELINE 40E SERIES EN 3915 © 2015 Pentair. All Rights Reserved.