

CODELINE® - 80E SERIES

8 INCH END ENTRY MEMBRANE HOUSING FOR RO APPLICATION

MEMBRANE HOUSING DATASHEET

ARTICLE CODE: 80E30, 80E45, 80E60, 80E100, 80E120

GENERAL INFORMATION

Codeline 80E Series is membrane housing of 8" diameter with end entry design. This is used for commercial, municipal and industrial RO applications. Vessel models are available upto a maximum operating pressure of 300 PSI, 450 PSI & 600 PSI, 1000 PSI & 1200 PSI. These are made up of epoxy / glass composite to meet the demands of long term and continuous use in RO processes. Codeline 80E Series vessels can accommodate any standard* 8" membrane element.

* Standard element length = 40 " long

UNIQUE FEATURES

- Mirror Finish ID for easy & quick loading and unloading of membranes
- Quick lock head retention system for quick access to membranes
- Exteriors coated with high gloss polyurethane paint for UV resistance
- Head seal is captured, hence doesn't roll during head assembly fitment
- Compatible for using in all water type application
- Available in ASME certified & CE Marked models

CERTIFICATIONS

- ASME code compliant
- CE certified

CODELINE 80E SERIES SPECIFICATION*

| MODEL NUMBER | DRAWING NUMBER | MAX. OPERATING PRESSURE | MAX. OPERATING TEMPERATURE | QUALIFICATION PRESSURE | ELEMENT LENGTH |
|-----------------|----------------|-------------------------|----------------------------|------------------------|----------------|
| CODELINE 80E30 | 99111 | 300 PSI / 20 Bar | 120 °F / 49 °C | 1800 PSI / 124 Bar | 1-8 |
| CODELINE 80E45 | 99112 | 450 PSI / 31 Bar | 120 °F / 49 °C | 2700 PSI / 186 Bar | 1-8 |
| CODELINE 80E60 | 99109 | 600 PSI / 41 Bar | 120 °F / 49 °C | 3600 PSI / 248 Bar | 1-8 |
| CODELINE 80E100 | 99108 | 1000 PSI / 68 Bar | 120 °F / 49 °C | 6000 PSI / 413 Bar | 1-8 |
| CODELINE 80E120 | 99110 | 1200 PSI / 82 Bar | 120 °F / 49 °C | 7200 PSI / 496 Bar | 1-8 |

* Specifications are subjected to change without prior notice (for more details refer model specific engineering drawings)

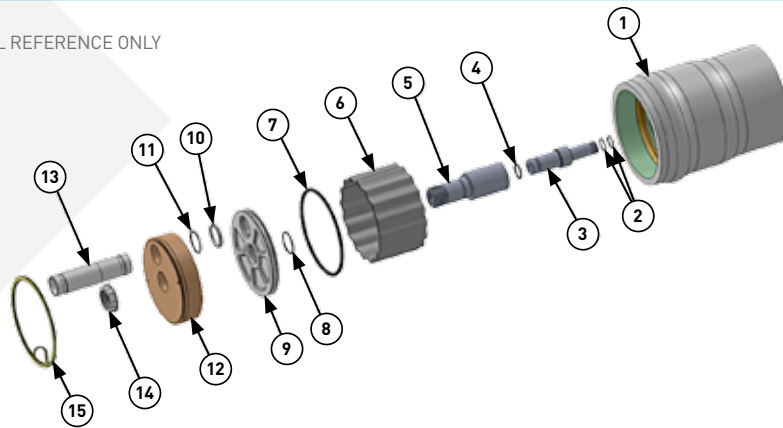
CODELINE® - 80E SERIES

8 INCH END ENTRY MEMBRANE HOUSING FOR RO APPLICATION

MEMBRANE HOUSING DATASHEET

EXPLODED VIEW & DETAILS

A GENERIC VIEW FOR VISUAL REFERENCE ONLY



PARTS TABLE

| DRG REG | QTY | DESCRIPTION | MATERIAL | 80E30 | 80E45 | 80E60 | 80E100 | 80E120 |
|---------|-----|--------------------------|--|---------------|---------------|---------------|---------------|---------------|
| | | | | PART NUMBER | PART NUMBER | PART NUMBER | PART NUMBER | PART NUMBER |
| 1 | 1 | Shell | Filament Wound Epoxy / Glass composites. Head Locking grooves integrally wound in place. | Order section | Order section | Order section | Order section | Order section |
| 2 | 4 | PWT Seal | Ethylene Propylene - O Ring | As required | As required | As required | As required | As required |
| 3 | 2 | Adapter | Engineering Thermoplastic | As required | As required | As required | As required | As required |
| 4 | 2 | Adapter Seal | Ethylene Propylene - O Ring | 52245 | 52245 | 52245 | 52245 | 52245 |
| 5 | 2 | Permeate Port | Engineering Thermoplastic | 50608 | 50569 | 50569 | 50558 | 50558 |
| 6 | 1 | Thrust Ring | Engineering Thermoplastic | 45069 | 45069 | 45069 | 45069 | 45069 |
| 7 | 2 | Head Seal | Ethylene Propylene - O Ring | 96000 | 96000 | 96000 | 96000 | 96000 |
| 8 | 2 | Perm Port Seal | Ethylene Propylene - O Ring | 45312 | 45312 | 45312 | 45312 | 45312 |
| 9 | 2 | Sealing Plate | Engineering Thermoplastic | 96003 | 96003 | 96003 | 96003 | 96003 |
| 10 | 2 | Port Retainer / Set | Stainless Steel / Two-piece Set | 45247 | 45090 | 45090 | 45090 | 45090 |
| 11 | 2 | FC Port Seal | Ethylene Propylene - O Ring | 45312 | 45312 | 45312 | 45312 | 45312 |
| 12 | 2 | Bearing Plate | 6061-T6 Aluminum Alloy - Hard Anodized | 51050 | 51051 | 51052 | 47317 | 47317 |
| 13 | 2 | Feed / Conc Port | Stainless Steel 316L** / Super Duplex Stainless Steel | 50607** | 50567** | 50567** | 50556 | 50556 |
| 14 | 2 | Port Retainer / Port Nut | Stainless Steel / Engineering Thermoplastic | 45247 | 45066 | 45066 | 45066 | 45066 |
| 15 | 2 | Retaining Ring | 316 Stainless Steel | 47336 | 47336 | 47336 | 47336 | 47336 |
| 16* | AR | Saddle | Engineering Thermoplastic | 52169 | 52169 | 52169 | 52169 | 52169 |
| 17* | AR | Strap Assembly | 304 Stainless Steel - PVC Cushion | 45042 | 45042 | 45042 | 45042 | 45042 |
| 18* | AR | Strap Screw | 5/16-18 UNC, 18-8 Stainless Steel | 46265 | 46265 | 46265 | 46265 | 46265 |

* Not shown in the exploded view

** Stainless Steel 316L material



CODELINE®

PENTAIR WATER INDIA PVT. LTD. L / 52 - 55, VERNA INDUSTRIAL ESTATE, VERNA, GOA, INDIA - 403 722 WWW.CODELINE.COM

Note: The information and data contained in this document are based on our general experience and are believed to be correct. They are given in good faith and are intended to provide a guideline for the selection and use of our products. Since the conditions under which our products may be used are beyond our control, this information does not imply any guarantee of final product performance and we cannot accept any liability with respect to the use of our products. The quality of our products is guaranteed under our conditions of sale. Existing industrial property rights must be observed.
DS CODELINE 80E SERIES EN 3915 © 2015 Pentair. All Rights Reserved.